



EcoEtruxure™  
Innovation At Every Level

# A single controller for process control and safety



Modicon M580 Safety Ethernet programmable automation controller (ePAC)

[schneider-electric.com](https://schneider-electric.com)

Life Is On

**Schneider**  
Electric

# Contents

- > A pioneering controller with measurable business benefits
- > Common Safety
- > The high-end capabilities of the world's first Safety ePAC
- > Seamless integration, from field to enterprise level
- > A best-in-class controller for your applications





# A pioneering controller with measurable business benefits

**A pioneering controller**

Common safety

High-end capabilities

Seamless integration

Segment applications





# Engineered to measurably improve your operational profitability

The Modicon™ M580 Safety Ethernet process automation controller (ePAC) is engineered to measurably increase the operational profitability of your operations safely.

## Continuous, open and transparent communication backbone

Complete implementation of Ethernet technology, using ODVA compliant protocols to provide truly open network implementation and the ability to communicate with all compliant devices regardless of their manufacturer.

## Securely integrate plant safety functions thanks to dual redundant processor architecture

Built-in safety functionality with dual redundant processor architecture. Eliminates the need to design expensive, separate safety systems.

## Complete integration of Ethernet architecture

Smart devices connected to the e-PAC can be transparently accessed through the e-PAC. This means the Apps and Analytics layer to access all the information needed to produce useful business intelligence: Diagnose your complete system from your smartphone, Predictive Maintenance of Power Supply, Dual Power Supplies Management Algorithms, Easy and Scalable Time Stamping System Solutions, Change your operations without stopping your process.

Schneider Electric is committed to providing innovative products, solutions, and services to help you succeed in the more connected, digital world.

## Discover EcoStruxure™: Innovation At Every Level

**A pioneering controller**



Common safety

High-end capabilities

Seamless integration

Segment applications



# Driving measurable profitability improvements – safely



**A pioneering controller**



Common safety

High-end capabilities

Seamless integration

Segment applications



# How the Modicon M580 Safety ePAC can transform your operations



## Reduce Time to Profit

e.g. Reduced design time of control and safety systems can save up to **3 weeks** on a **3 month** project resulting in a **\$2 million** of extra **production at launch**



## Increase Operational Profitability, Safely

Transparent, open native networks for data driven improvements to plant control and safety systems. Improved visibility can result in over \$1.3M in annual bottom-line impact for the typical plant.



## Improve Reliability & Sustainability

Enhanced visibility for improved energy management, safety and control system troubleshooting. Can yield up to \$1.8 million/ year in measurable profitability improvements for the average large facility



## Manage Operating Risk

Achilles Level 2 certification which as part of a plant wide cybersecurity plan could reduce the risk of cyber attack saving on average more than \$1.25 million/ year in related costs. Faster processor scan time can results in safety system response.



## Improve Productivity

Enhanced control and safety system performance. 5X faster scan time can result in gains of \$2 million / year in typical high volume manufacturing plants. Event log helps drive continuous safety improvements

## Modicon M580 Safety:

The Modicon M580 Safety Controller is the only PAC in the marketplace that, when applied correctly, offers 100% Measurable\* ROI, Safely, within three months of implementation.

\*Patent protected

A pioneering controller

Common safety

High-end capabilities

Seamless integration

Segment applications



# The safety controller with native Ethernet

The Modicon M580 Safety ePAC is the first common safety process automation controller with Ethernet built into its core. This allows you to simplify data exchanges across your enterprise and helps you keep up with the evolving trends in industrial automation.

- **Higher resistance to cybersecurity threats**  
Thanks to the Internet Protocol security (IPsec), encrypted firmware, extended access list, protocol management, and the Achilles Level 2 Security Certification
- **Seamless migration**  
As all Modicon units are managed by a single software – Unity™ Pro
- **Intuitive for future generations**  
Access to all process data from mobile devices



M580 Safety, the ePAC for today and tomorrow

**A pioneering  
controller**



Common  
safety

High-end  
capabilities

Seamless  
integration

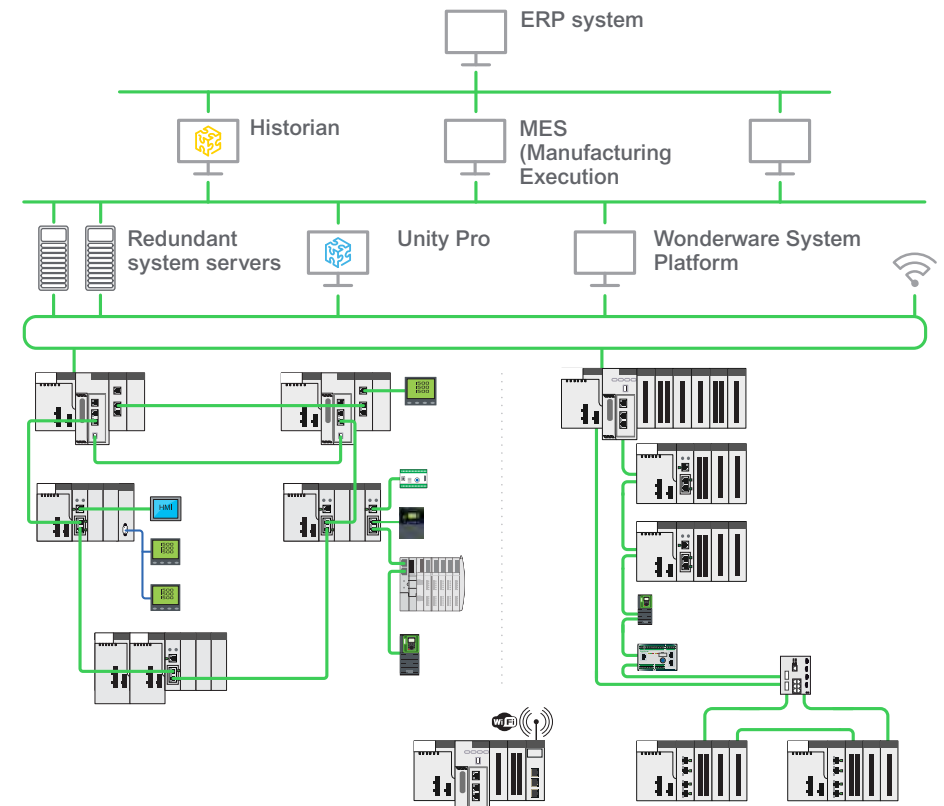
Segment  
applications



# Automation solutions with greater transparency, availability, and flexibility

- From field to enterprise level, our automation architectures are based on the standard industrial Ethernet network
- The availability level can be tailored to your application constraints with redundancy for CPUs\*, power supplies, I/O as well as for servers, and networks
- For remote applications, extensions are possible via optical fibers between the CPUs or remote racks; additionally, remote diagnostics can be performed via Wi-Fi
- As a common safety controller, the M580 Safety ePAC delivers safety and process control integrated in a single device for reduced complexity and costs and improved operational profitability

\* tailoring availability for redundancy for CPUs is a pending capability



**A pioneering controller**



Common safety

High-end capabilities

Seamless integration

Segment applications





# Modicon's proven track record

From a groundbreaking programmable logic controller (PLC) introduced in 1968, Modicon technology has evolved over the last five decades to bring revolutionary results.

## Take advantage of our experience

- 50+ years of experience in designing automation solutions
- 30+ years of providing high availability systems with redundancy
- X80 I/O range used by all other Modicon controllers, backed by 10+ years in the field
- 10+ years of continuous improvement in Unity Pro software



**A pioneering controller**



Common safety

High-end capabilities

Seamless integration

Segment applications

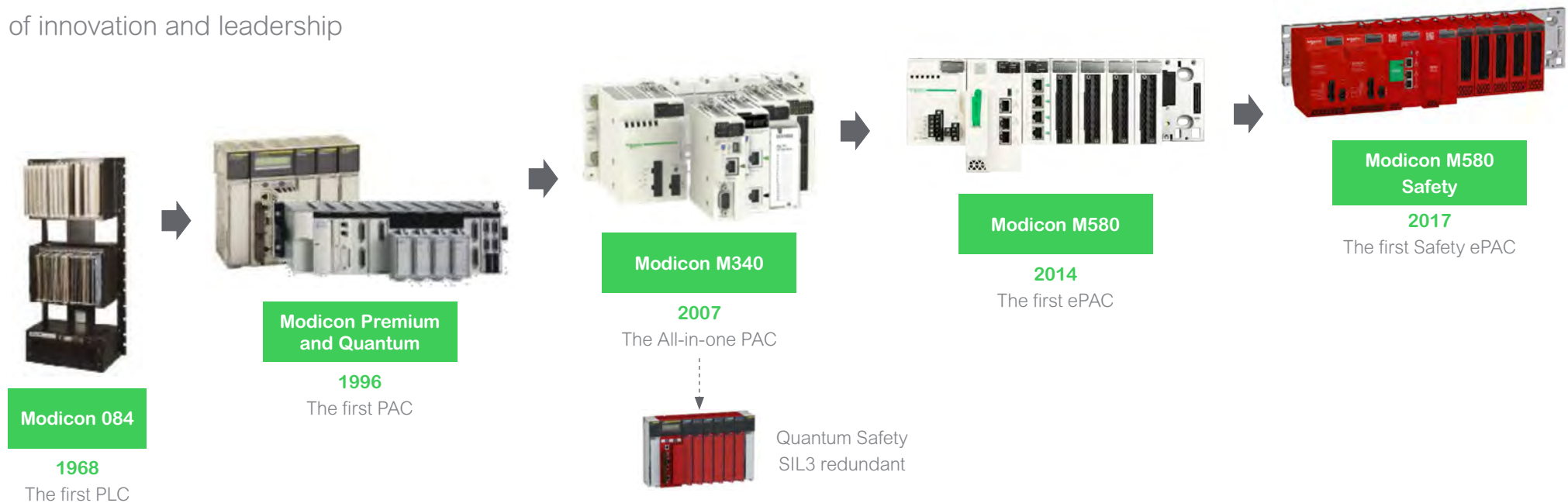


# Modicon's proven track record

From a groundbreaking PLC to a high-end safety ePAC

## 50 Years

of innovation and leadership



A pioneering controller



Common safety

High-end capabilities


Seamless integration


Segment applications





# What's new in the Modicon M580 Safety?


Behind the Modicon M580 Safety ePAC's unique capabilities are a number of new features


- 


Integrated **process control and safety** together thanks to **common safety**
- 

Complete **integration** of Ethernet architecture
- 

From transparent to **highly secured** architecture – a **common safety controller** truly ready for the IIoT with built in **advanced cyber security**
- 

Dynamic **error code correction** and **high diagnostic capabilities** for improved system reliability
- 

Securely **integrate plant safety** functions thanks to **dual redundant processor** architecture
- 

Continuous, open and transparent **communication backbone**
- 

Default **conformal coating** protects from **harsh environments** that may contain moisture and or chemical contaminants

**A pioneering controller**



Common safety

High-end capabilities

Seamless integration

Segment applications





# Common Safety

A pioneering  
controller

**Common  
safety**

High-end  
capabilities

Seamless  
integration

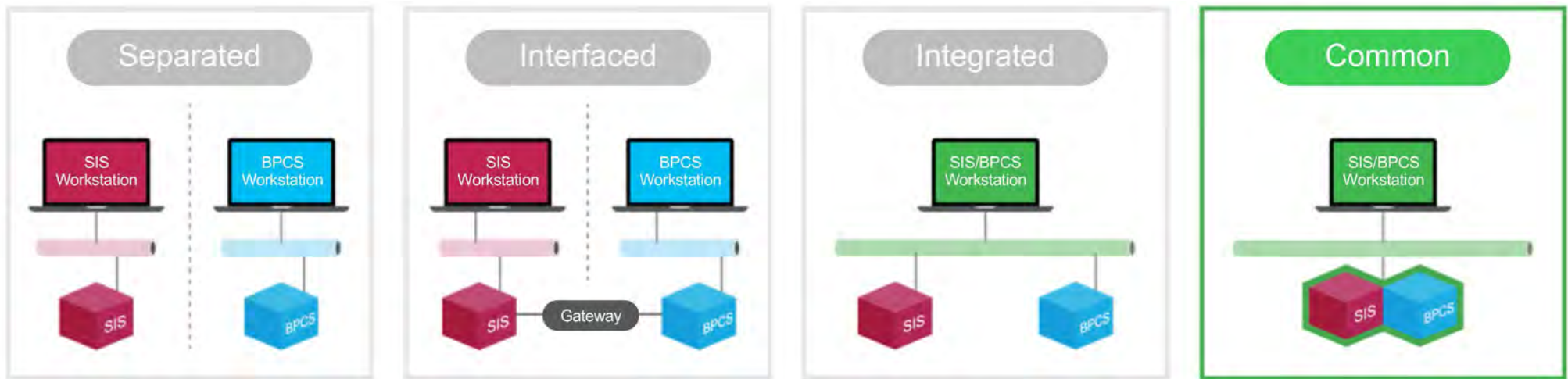
Segment  
applications





# What is Common Safety?

- **Common Safety** is a technology which allows a closer integration of process and safety functions. It ensures that both process and safety operations are separate and independent with different hardware resources in a common engineering environment.
- Safety and non-safety modules are **integrated seamlessly** to provide a high level of flexibility, adaptability and easy-of-use.
- The **common engineering environment** provides independent and password protected tasks for the safety functions.



A pioneering  
controller

**Common  
safety**

High-end  
capabilities

Seamless  
integration

Segment  
applications



# What is driving Common Safety in Hybrid Industries?

Today's industrial environment has an increased need for:

- Closer integration with automation systems
- Ease of use
- System architecture performance, flexibility & interoperability
- Reduced engineering time and cost needed to provide an effective safety system
- Shorter times to develop systems and be up-and-running

*New technology now makes it feasible to integrate Process Control & Safety together, in a single, common safety controller*

A pioneering  
controller

**Common  
safety**



High-end  
capabilities

Seamless  
integration

Segment  
applications





# A safety ePAC with all the high-end capabilities of the world's first ePAC

A pioneering controller

Common safety

**High-end capabilities**

Seamless integration

Segment applications

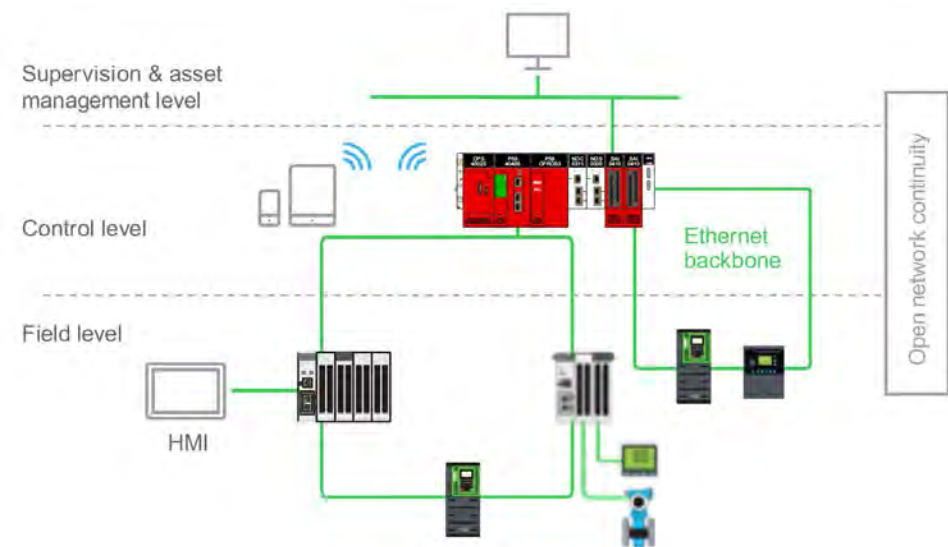


# Native Ethernet capabilities

Thanks to the built-in Ethernet backbone in the Modicon M580 ePAC, the components in your plant control architecture are seamlessly interconnected to reap IIoT benefits.

## Continuous communication flow

- Direct high-speed communication between control and devices for faster configuration and maintenance
- Direct high-speed deterministic communication between CPU and I/O modules for higher precision



- Top-to-bottom standard Ethernet network
- Open architecture with a direct Ethernet connection on backplane
- Ethernet remote I/O racks and drive on Ethernet service drop port

A pioneering  
controller

Common  
safety

**High-end  
capabilities**



Seamless  
integration

Segment  
applications





# Native Ethernet capabilities

## Integrated Ethernet infrastructure

- Wi-Fi communication, fiber-optic converter, router, and switch functions are embedded into the configuration
- Easy cabling with a third Ethernet port available on all Ethernet modules

## Openness

- Open to third-party devices supporting Modbus TCP and Ethernet IP
- Standard FDT/DTM combined with Ethernet simplifies management of third-party devices
- Backplane open for easy design of Modicon X80 expert modules by CAPP partners (network socket communications, GPS support, weighing modules, and expert diagnostics)



A pioneering  
controller

Common  
safety

**High-end  
capabilities**



Seamless  
integration

Segment  
applications



# High performance...

The Modicon M580 Safety ePAC delivers a remarkably high level of computing power for increasingly data-intensive processes.

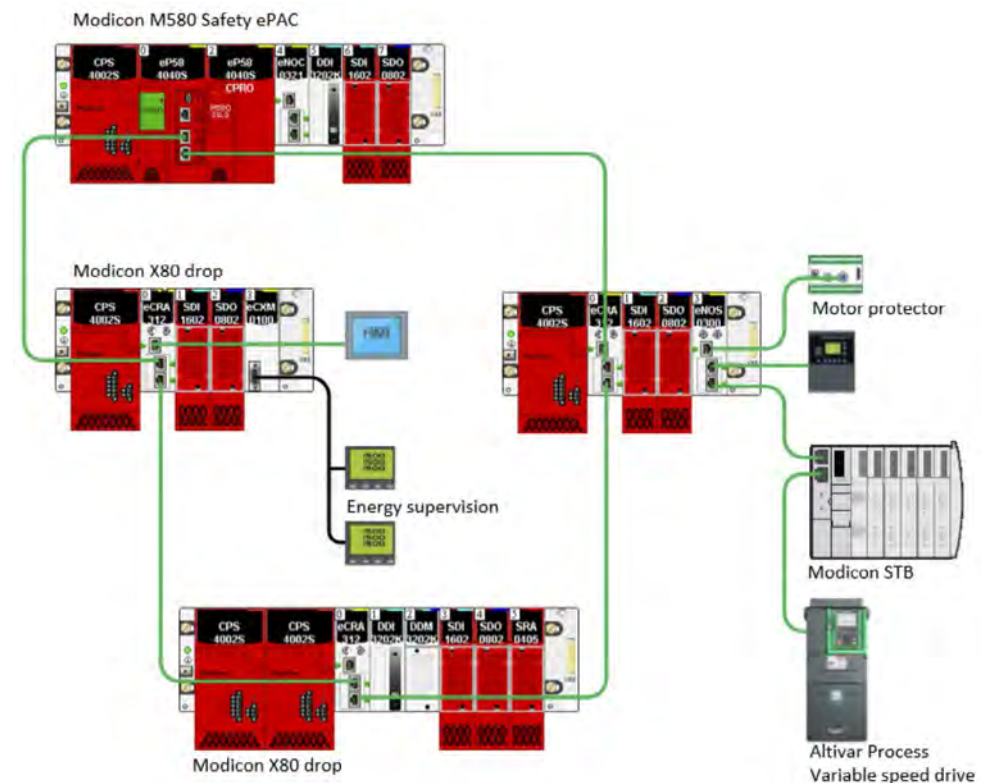
## Key features

- Multi-core processor: parallel processing to optimize application execution
- No impact on scan time, even when processing large data flow, thanks to the unique Ethernet architecture

## High performance

- End-to-end 100 Mbps speed, from top to bottom
- Application response time on safety up by 5 times\*
- 16 MB memory\*

\*Compared with legacy ranges



A pioneering  
controller

Common  
safety

**High-end  
capabilities**

Seamless  
integration

Segment  
applications



# Enhanced cybersecurity

The Modicon M580 Safety ePAC's cybersecurity system has proved effective in rigorous testing with simulated cyberattacks. Firmware and software integrity is checked at every startup and during runtime, and encrypted in memory to prevent decompilation by a third party.



Successfully prevented cyberattacks by hackers during lab tests

## Cybersecurity-ready

- IPsec communications protocol
- Cybersecurity certified (Achilles Level 2)
- Encrypted password access
- Strict supervision of firmware and software integrity
- Easy to configure via the Unity Pro platform
- Audit trail of login
- Hardened access control

A pioneering  
controller

Common  
safety

**High-end  
capabilities**



Seamless  
integration

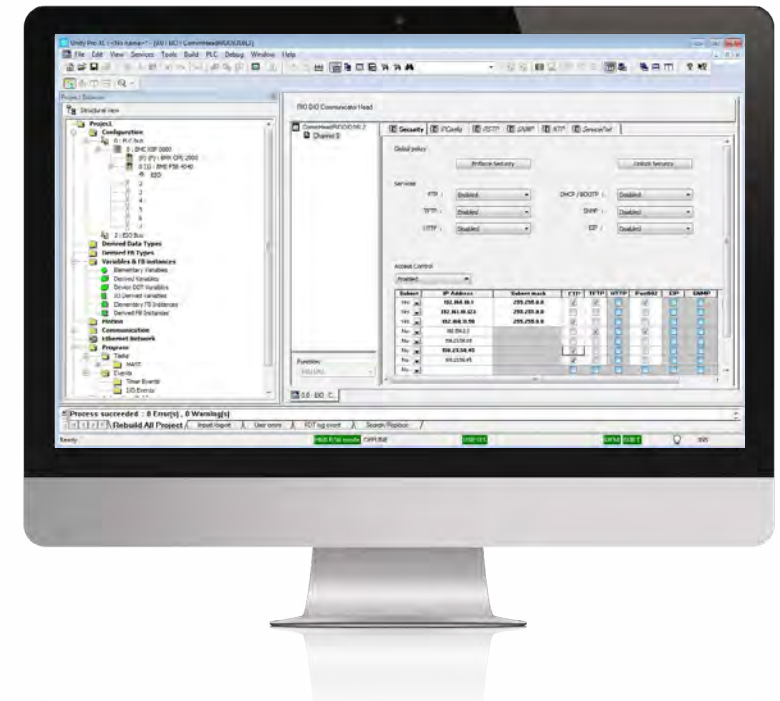
Segment  
applications



# Enhanced cybersecurity

## Unity Pro cybersecurity configuration

- Easy to set the required security level
- Configuration does not require a cybersecurity expert; configurable by authorized plant personnel
- The device's default mode is secure



A pioneering  
controller

Common  
safety

**High-end  
capabilities**

Seamless  
integration

Segment  
applications





# More flexibility in design

With the Modicon M580 Safety ePAC, you enjoy versatility in architecture design, allowing you to reduce development costs

## Use Ethernet as an I/O network

- Flexibility in design thanks to a rich library of Tested, Validated, and Documented Architectures (TVDA's)
- Ring architecture provides additional network resilience

## Mix core control devices on Ethernet

- Flexible topology allows simple integration of core control devices
- Ability to mix remote **Safe and non-Safe** I/O, distributed I/O, and other devices on the same Ethernet field network with easier software integration
- Transparent access to data through the Ethernet backbone

## Easily connect to fieldbus and other networks

- Simple HMI operator panel integration via third port on the remote I/O head
- Interface to other popular fieldbus and device networks, including AS-Interface, Modbus, Profibus, HART, and CANopen

## Simplified architecture reduces costs

- A common and unified hardware and software (reduced need for training/ spare parts/operation/maintenance/etc...)
- A highly flexible and scalable solution with the possibility to mix architectures to best suit your needs
  - Manage both Safety and Non-Safety applications
  - Separate Safety and Process Control

A pioneering  
controller

Common  
safety

**High-end  
capabilities**



Seamless  
integration

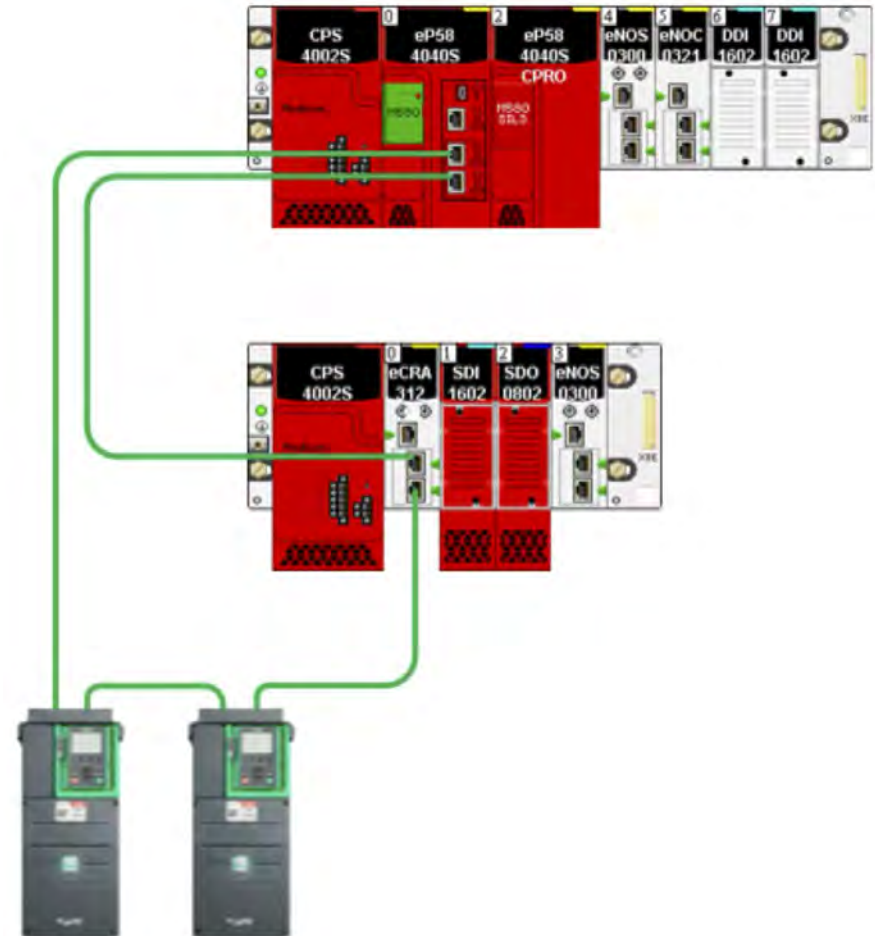
Segment  
applications



# More flexibility in design

Drives directly integrated on the Ethernet remote I/O bus

- No additional cabling cost
- High availability with self-recovery loop
- Easy integration through FDT/DTM technology
- Ready-to-use function blocks in the Unity Pro platform for Altivar™ Process variable speed drives
- Easy replacement with drive configuration stored in the Modicon M580 Safety ePAC



A pioneering  
controller

Common  
safety

**High-end  
capabilities**



Seamless  
integration

Segment  
applications

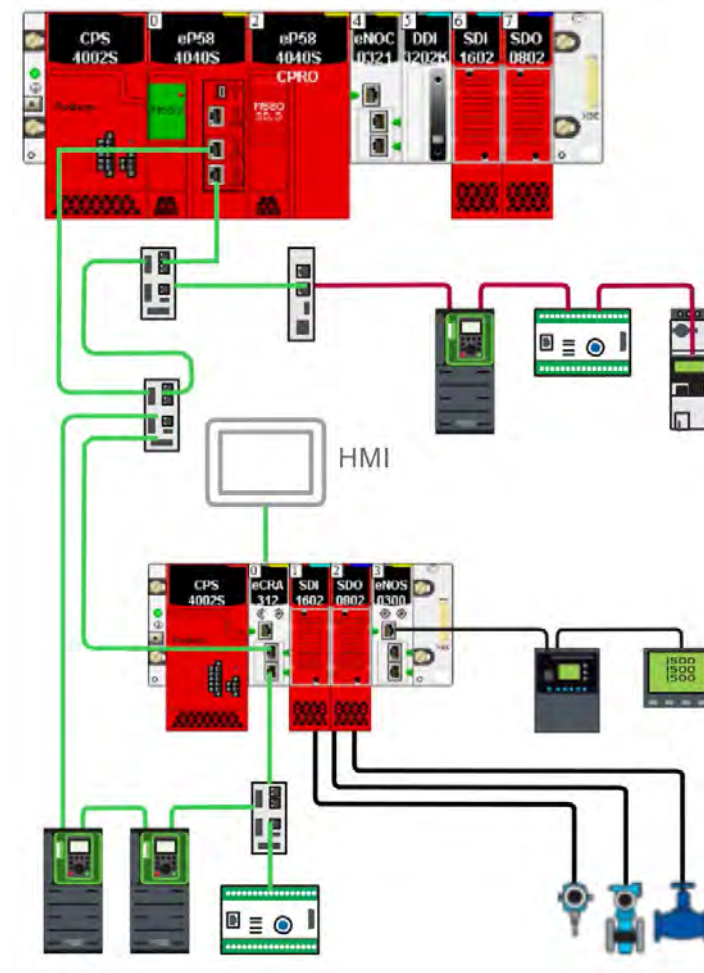


# More flexibility in design

## Fully integrated plant control architecture

Interconnect both your control equipment and safety equipment with flexibility:

- Ethernet remote I/O drops
- Drives on Ethernet RIO
- Distributed I/O
- Gateway for fieldbus on Ethernet RIO
- Devices on Ethernet services ports



A pioneering  
controller

Common  
safety

**High-end  
capabilities**

Seamless  
integration

Segment  
applications



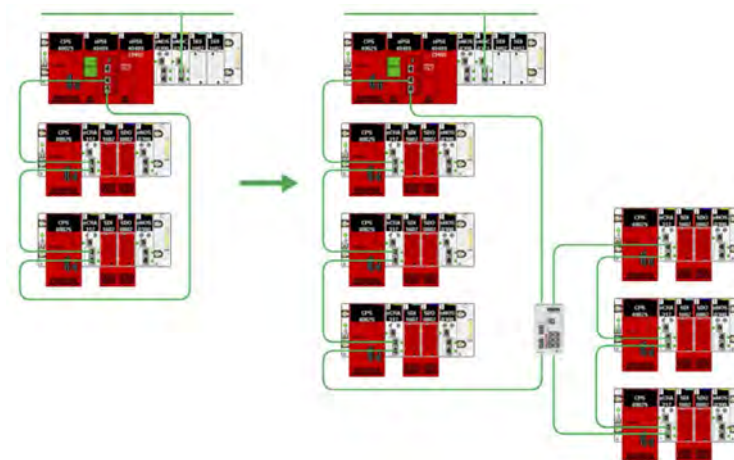
# Greater agility for your operations

The Modicon M580 Safety ePAC supports the agile development methodology, where you can adapt your applications and architecture incrementally for immediate results. This not only reduces downtime but also ensures higher process quality.

Perform live updates while the process is running – with change configuration on the fly

- Add new RIO drops or new modules to the architecture
- Hot swap your modules – with automatic reconfiguration
- Modify application or change variables

 Reduce downtime with a wide set of CCOTF features



Evolve and scale your architectures without stopping the process

A pioneering  
controller

Common  
safety

**High-end  
capabilities**



Seamless  
integration

Segment  
applications







# Seamless integration, from field to enterprise level

A pioneering  
controller

Common  
safety

High-end  
capabilities

**Seamless  
integration**

Segment  
applications



# The Modicon M580 Safety ePAC, the high-end integrated common safety controller

EcoStruxure™ is our IoT-enabled, open, and interoperable system architecture that transparently connects the control, operation, and enterprise levels of your business.

The Modicon M580 Safety ePAC gives you the power to design, implement, and run processes that efficiently employ the benefits of open networking, helping you:

- Access consistent and accurate data for timely decisions
- Reduce downtime with detailed insight into alarms and events
- Rapidly diagnose and identify root causes of issues
- Make informed decisions about plant operations and energy management



The Modicon M580 Safety ePAC

A pioneering  
controller

Common  
safety

High-end  
capabilities

**Seamless  
integration**

Segment  
applications



# Native integration with best-in-class SCADA supervision systems

The Modicon M580 Safety ePAC integrates seamlessly with best-in-class SCADA software, including Wonderware and the SCADA Expert Vijeo Citect.

This native integration allows operators to handle process disturbances efficiently and without delay, thanks to:



Optimized configuration for high-speed communication and better response time



Online modification or configuration of the Modicon M580 Safety ePAC all within the SCADA system



Direct view of controller alarms within the SCADA interface



Visibility of all process data and field devices from the SCADA level



Native diagnostic of the entire control system embedded in SCADA

A pioneering controller

Common safety

High-end capabilities

**Seamless integration**

Segment applications



# Native integration with best-in-class SCADA supervision systems

## Wonderware System Platform

### Key features

- Seamless integration with the Modicon M580 ePAC thanks to Open Platform Communications (OPC)
- Ready-to-use, out-of-the-box function blocks and faceplates
- Situational awareness functionality

## SCADA Expert Vijeo Citect platform

### Key features:

- Seamless integration with the Modicon M580 Safety ePAC thanks to Open Platform Communications (OPC)

Wonderware System Platform and SCADA Expert Vijeo Citect platform provide faster time-to-market and enhanced operational efficiency, thanks to:

- Reduced risk
- Improved process uptime
- Reduced loss of production



A pioneering  
controller

Common  
safety

High-end  
capabilities

**Seamless  
integration**

Segment  
applications





# Greater energy efficiency with Altivar Process drives

The combination of the Modicon M580 Safety ePAC and Schneider Electric's Altivar Process variable speed drives results in a truly productive, efficient, and energy-aware process.

- Altivar Process provides dual Ethernet daisy-chain ports and high availability
- DTM integrated for the Unity Pro FDT container, allowing easy access to your equipment's data without developing a special user interface
- Dedicated object libraries, embedded commissioning tools, and predictive/preventive diagnostics simplify the configuration and maintenance of automation assets
- The embedded energy measurement functions in Altivar Process allow you to easily monitor the energy performance of your more demanding assets (motors, pumps, fans), helping optimize the overall energy efficiency of your process
- Altivar Process variable speed drives



A pioneering controller

Common safety

High-end capabilities

**Seamless integration**

Segment applications







# A best-in-class controller for your applications

A pioneering  
controller

Common  
safety

High-end  
capabilities

Seamless  
integration

**Segment  
applications**





# Comprehensive solutions and support for system integrators

As the global specialist in energy management and automation, Schneider Electric offers comprehensive solutions and support to meet system integrators' requirements across numerous market segments.

From design through to implementation, Schneider Electric technology helps system integrators reduce time-to-market thanks to:

- A single automation platform for multiple applications
- Tested, Validated, and Documented Architectures (TVDA's)
- PSX builder tools, object-oriented programming, and libraries
- Simplified spare-part management



Join our System Integrator Alliance Partners program, today!



A pioneering controller

Common safety

High-end capabilities

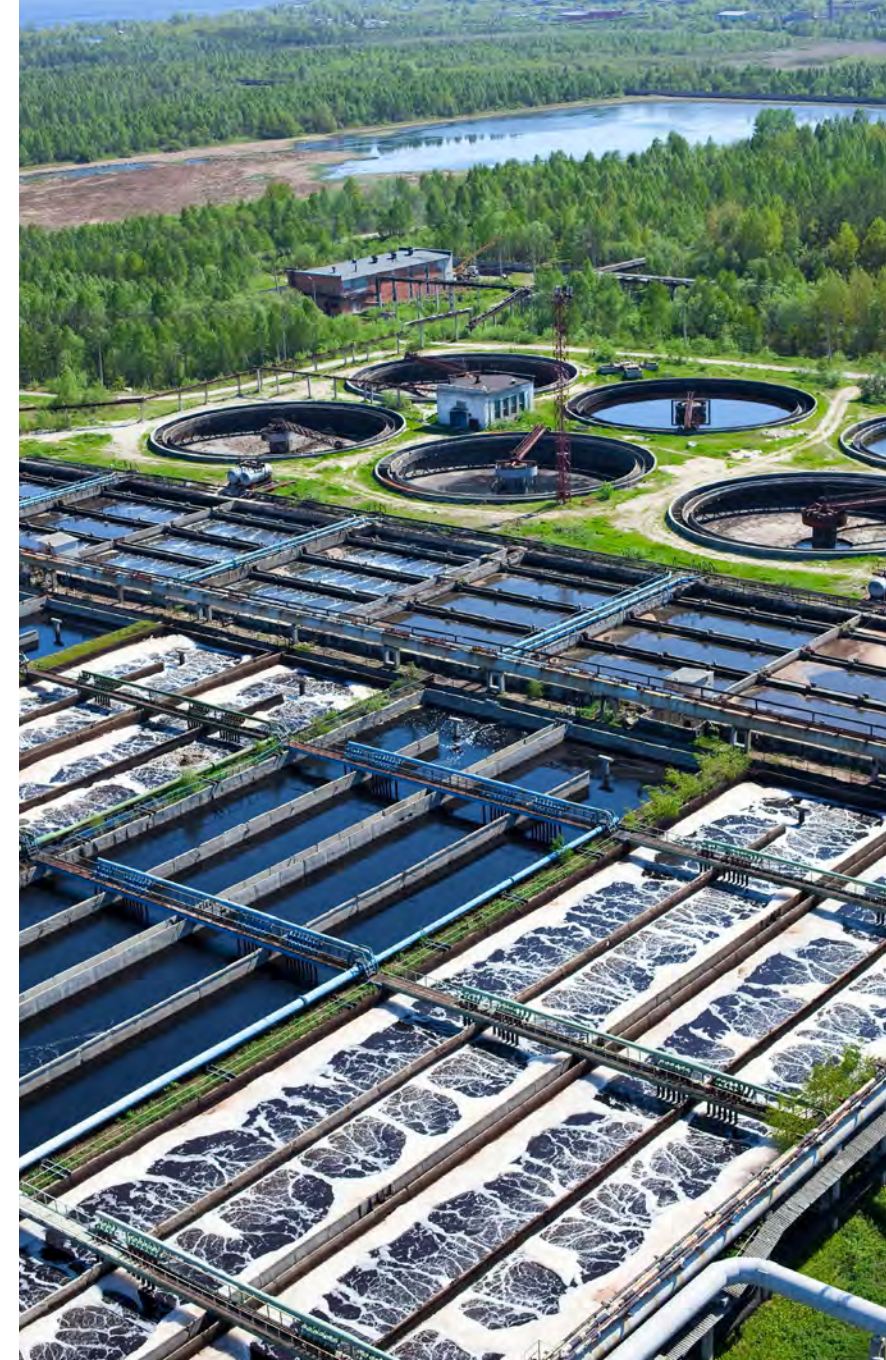
Seamless integration

**Segment applications**



# Wastewater treatment

- Control safety functions for processes which create biogas from sludge
- Simplify control architecture with common safety controllers for gas protection and fire systems
- Comply with advanced cybersecurity standards to protect critical infrastructure applications
- Increase operational reliability in harsh environments thanks to hardened systems
- Improve remote control with integrated RTU communications based on telemetry protocols
- Improve operational profitability and maintenance efficiency with advanced pump control and diagnostics through integration with Altivar Process variable speed drives
- Simplify management of smart devices and instruments with Ethernet and fieldbus connectivity



A pioneering  
controller

Common  
safety

High-end  
capabilities

Seamless  
integration

**Segment  
applications**





# Food & Beverage

- M580 Safety certified to control safety related functions in food and beverage plants such as burner temperature control, gas detection in explosive atmospheres and machine safety (e.g. material handling etc).
- Features such as integrated Ethernet backbone, AS-I Master modules, and weighing solutions help you simplify your control architecture and improve profitability.
- Install ATEX-compliant products where applicable for explosive environments
- Processing power and 64 MB of memory help you standardize hardware across diverse plant processes.
- Improve performance reliability with remote I/O synchronization
- Easy integration with FDT/DTM technology
- Changes can be made without shutting down key processes which reduces downtime
- Native 4 GB SD card lets you store your recipes locally in the controller
- Built in high bandwidth Ethernet gives you the visibility to understand and optimize your processes
- Ability to connect HMI to native service ports enhances local plant floor control for increased safety and productivity



A pioneering  
controller

Common  
safety

High-end  
capabilities

Seamless  
integration

**Segment  
applications**





# Mining & Metals

- Control systems for safety application in mining and metals including:
  - Crane and Hoist control (weight load, speed and transmission of mine hoists or overhead cranes) to protect both machinery and operators
  - Machine safety (e.g. for material handling applications)
  - Control safety functions for burners, boilers or compressors
  - Control gas detection, fire systems and dust explosion risks
- Change configuration on the fly to reduce the downtime associated with maintenance activities.
- Redundant power supplies coupled with ring topology for high availability in critical applications
- Faster scan time and the largest CPU memory available so you can achieve higher performance and productivity
- Flexible Ethernet-based automation architectures to make it easier to develop new systems and upgrade existing ones



A pioneering  
controller

Common  
safety

High-end  
capabilities

Seamless  
integration

**Segment  
applications**



Life Is On



For more information  
about the Modicon M580 ePAC, visit

[schneider-electric.com](https://schneider-electric.com)

**Schneider Electric**

35 rue Joseph Monier  
92500 Rueil-Malmaison, France  
Tel: +33 (0)1 41 29 70 00

©2018 Schneider Electric. All Rights Reserved. Life Is On Schneider Electric, Modicon, and Altivar are trademarks and the property of Schneider Electric SE, its subsidiaries and affiliated companies. 998-20233655\_GMA

